



Dismantling and Site Clearance of former Coal Handling Plant & Equipment

Location: Redcar, Middlesborough

Scope: Dismantling, Demolition and scrapping service of former coal side material handling conveyors, junction house and associated equipment

Disciplines: Industrial dismantling, live operational plant operations

Client: British Steel Ltd

Programme: 12 weeks

Value: £750,000

Ron Hull Demolition Ltd were contracted by Redcar Bulk Terminal to remove redundant conveyor systems incorporating several transfer towers, drive towers, two 100 metre lighting towers and two stacker/ unloaders weighing 350 tonne's each.

The programme period for demolition and site clearance was 12 weeks, the contract was completed in 7 weeks.

There were several constraints whilst undertaking the contract. The site was a live distribute site consisting of thousands of acres holding hundreds of thousands of tonnes of material which was added to or removed daily. This proved logistically challenging due to the volume of lorries running on live roads under the redundant high-level conveyors to be demolished, along with daily cargo trains to be loaded adjacent to site.



Daily co-ordination meetings were held between Ron Hull Demolition Ltd and Redcar Bulk Terminal management teams to overcome the problems. Out of hours working was employed to minimise disruption during road closures for removing sections of conveyors oversailing roads.

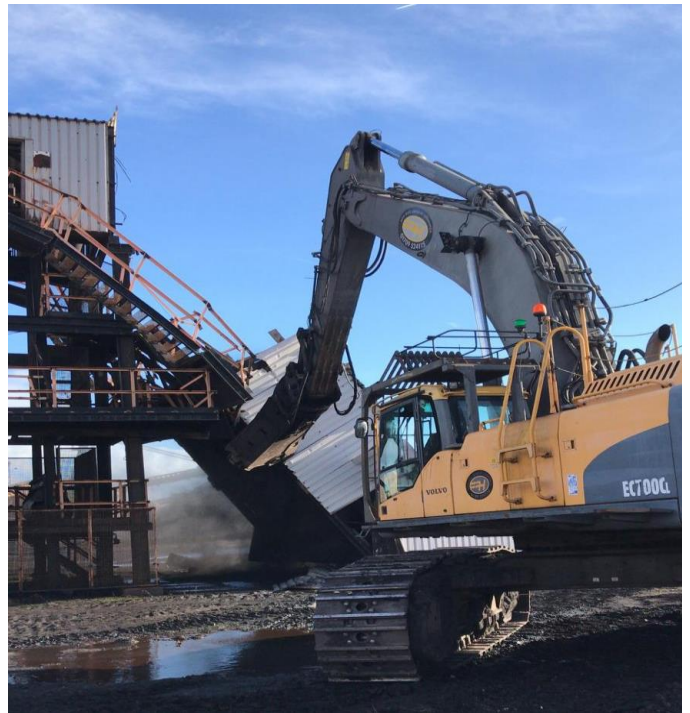
There was also a section removed from above live services feeding existing plant. All these sections were removed by tandem lifting and cranes, the remaining sections were demolished by a 70 tonne high reach machine equipped with steel shear.



The top 40 metres of the two lighting towers were removed by one of the cranes, operatives accessed the towers by 85 metre boom to hot cut the structure to enable removals. The remaining 60 metres was removed by hot cutting two of the legs before toppling by a 42 tonne demolition spec excavator.



The two stacker/ unloaders boom and counter balance at super structure level was de-constructed by excavator and shear eliminating the need for operatives working at height. The super structure and base were then toppled by the excavator for further processing by machine and hot works operatives.



Recycling Rate

The project was completed ahead of programme with no incidents or lost-time accidents and to the total satisfaction of our client. A total of 2,900 tonne's of steel was processed throughout and transported for recycling by our own transport.